

How can advanced diagnostics with the iTrace improve my premium lens practice?

Improve Outcomes

- Optimize patient-to-procedure matching to ensure a more successful premium practice.
- Utilize the Toric Planner to improve precision and enhancement success.

Improve Efficiency

- 5-in-1 system: auto-refractor, ray tracing aberrometer, corneal topographer, auto-keratometer, and pupillometer.
- Streamlined pre-op assessments and less chair time with post-op complications.

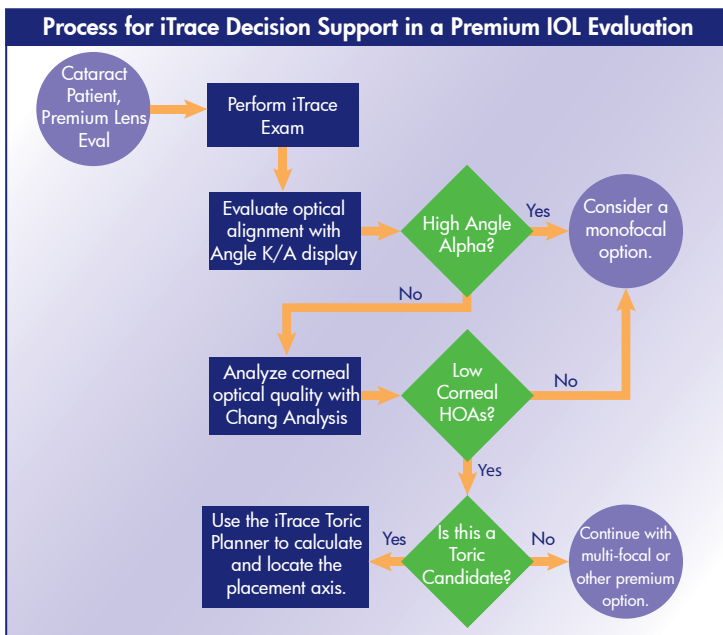
Differentiate the Practice

- With premium information, provide premium service with advanced diagnostics from the iTrace.
- Be one of the few practices in your market to offer patients the advanced diagnostics from the iTrace.



To ensure a successful premium practice, **premium lenses must provide premium vision**. If they miss the mark, the suboptimal results will become problematic with extended follow-up, additional treatments or worse, detrimental word-of-mouth advertising. Your patients and your practice benefit by your carefully determining if the patient is a candidate for premium lenses and by your planning the best premium lens treatment.

How can the iTrace help?

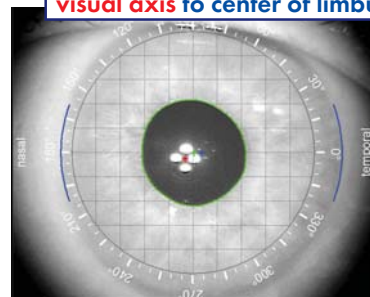


Understand Optical Alignment

First, the iTrace helps you understand the patient's optical system alignment. By analyzing the central location of the capsular bag, which is the same as the center of the limbus, and generally where the IOL will center, and comparing it with the center of the visual axis, you will know if the IOL optics will be aligned properly. The iTrace gives you this "Angle Alpha".

If the Angle Alpha is significant, a multi-focal will be misaligned and cause high order aberrations producing poor results. In these cases, the patient could achieve more optimal results with a monofocal lens offering a large forgiving optic.

Angle Kappa = visual axis to center of pupil
Angle Alpha = visual axis to center of limbus



The iTrace provides the polar and rectilinear coordinates for the angle kappa and angle alpha as part of the exam process.

Analyze Corneal Clarity and Premium IOL Support

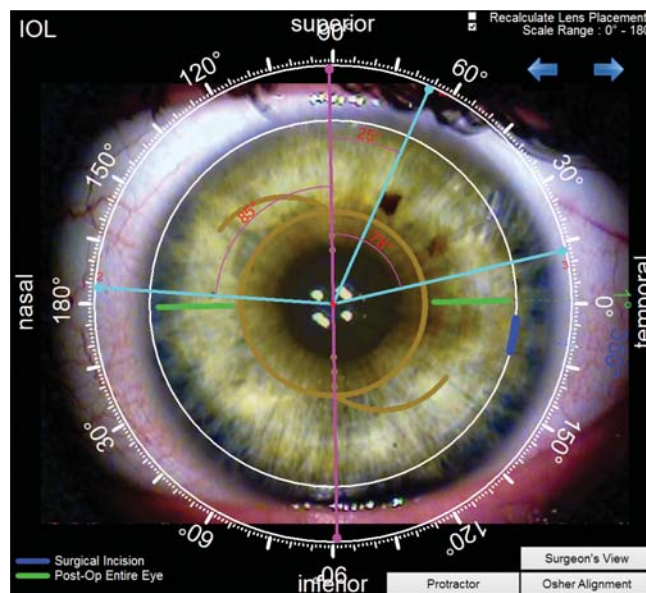
Second, the iTrace separates corneal and lenticular aberrations. You will **know if a patient's aberrations originate in the cornea or the lens**. If there are minimal higher order aberrations in the cornea, the patient will do well with a premium IOL.

If however, the cornea is highly aberrated, it will not support the premium lens and the patient will not achieve premium vision. Additionally, you can confirm or disprove if a patient's internal optics are compensating for any corneal astigmatism, and adjust your plan accordingly. You may need to offer a Toric IOL to a patient who has never before needed astigmatism correction because of lens compensation.

Increase Toric IOL Precision

Third, the iTrace offers unique tools to increase toric IOL precision. Experts agree that with each degree of off-axis rotation, the patient will lose three percent of the power of their toric correction. So even a five degree placement error will result in a 15% reduction of success. With the iTrace's **integrated toric calculator, surgically induced astigmatism analysis and marking tools**, you can **improve the precision of your toric power selection and placement**.

The integrated toric calculator presents you with several toric power options and predicted results so that you can select the best toric power for the outcome you intend. Once you select the lens, you can adjust the incision site "on the fly" to see how it might fine tune the residual astigmatism. Then, precisely determine the location of the placement axis in relation to actual landmarks or surgical ink marks.



Using the iTrace color image, Osher Ring and protractor tools, you can know exactly where the surgical marks or other landmarks are located in relation to the axis of placement.

Assess Treatment Success

Finally, using a post-op iTrace exam you can review the patient's visual performance and analyze your treatment success using the Chang Analysis display. **Know at a glance if the IOL you've chosen is achieving the intended results.** In the case of a toric, view the corneal and internal toricity axes to see if they exactly offset. Then, with the Toric Planner, evaluate how a slight enhancement rotation might improve the outcome.

With the iTrace you can be confident that you will select patients that can achieve premium vision, determine the best treatment and provide premium outcomes with improved procedure precision. If you avoid the potential problem cases and can **provide premium results** for every premium patient, you can **assure a successful premium lens practice**.